



COMPANY PROFILE

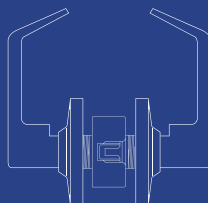
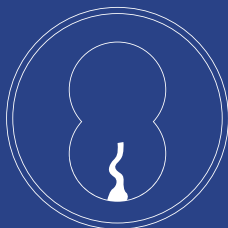
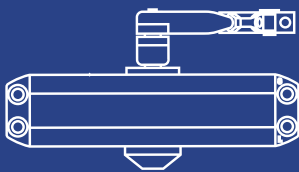
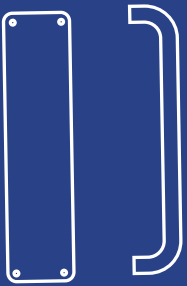
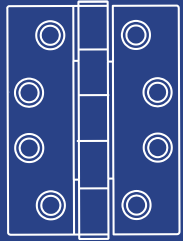
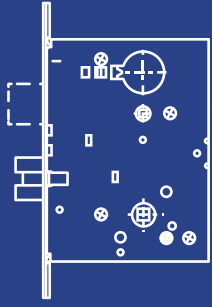


Table of Content

<i>INTRODUCTION</i>	<i>01</i>
<i>PRODUCT RANGE</i>	<i>03</i>
<i>MASTER KEY FACILITY</i>	<i>09</i>
<i>MARKET SEGMENTS</i>	<i>11</i>
<i>REGIONAL FOCUS</i>	<i>12</i>
<i>QUALITY ASSURANCE</i>	<i>13</i>
<i>NOTABLE PROJECTS</i>	<i>14</i>





Introduction

At D4E, we pride ourselves on delivering top-tier architectural door hardware solutions that meet the highest standards of quality and innovation. Originating from the Netherlands, our brand has grown to become a trusted name in the industry, known for our certified products tailored to both American door hardware and European ironmongery standards.

Our designs for excellence is reflected in our state-of-the-art master key manufacturing facility located in the United Arab Emirates. This facility is dedicated to serving the GCC markets, ensuring that our clients receive the best in security and convenience.

Explore our catalog to discover a wide range of products designed to enhance the functionality and aesthetics of any architectural project. With D4E, you can be confident in the durability, reliability, and sophistication of your door hardware solutions.

At D4E you are assured of:

- Personalized service.
- Product quality.
- Competitive price.
- Local after sale support.
- Top-notch quality "Design for Excellence".
- We are the specialists with technical expertise.
- Shorter delivery time from stock.
- Certified products as per industry standards and compliances.

We look forward to building a long-term business relationship and assure you of our very best always.





Mission Statement

At D4E, our mission is to revolutionize the architectural door hardware industry by delivering innovative, high-quality solutions that enhance the functionality and aesthetics of every space. We are committed to excellence, sustainability, and customer satisfaction, ensuring that our products not only meet but exceed the expectations of our clients.

Vision Statement

Our vision is to become the leading global provider of architectural door hardware, recognized for our cutting-edge designs, superior craftsmanship, and unwavering dedication to sustainability. We aim to set new standards in the industry, inspiring architects and designers worldwide to create spaces that are both beautiful and functional.

Core Values

Innovation: We continuously strive to push the boundaries of design and technology, bringing fresh and creative solutions to the market.

Quality: Our commitment to quality is unwavering. We use the finest materials and the latest manufacturing techniques to ensure our products are durable and reliable.

Sustainability: We are dedicated to sustainable practices, from sourcing eco-friendly materials to implementing energy-efficient processes in our production.

Customer Focus: Our customers are at the heart of everything we do. We listen to their needs and work closely with them to deliver tailored solutions that meet their specific requirements.

Integrity: We conduct our business with the highest ethical standards, building trust and long-lasting relationships with our clients, partners, and employees.

Excellence: We pursue excellence in every aspect of our work, from design and production to customer service and support.

Product Range

D4E

Architectural Ironmongery
European Standard

www.d4eme.com

BS EN architectural ironmongery, where quality and compliance meet to enhance the functionality and aesthetics of your building projects. The British and European Standards (BS EN) for architectural ironmongery set the benchmark for excellence in design, manufacture, and performance of door hardware and related products.



ANSI/BHMA architectural door hardware. The Builders Hardware Manufacturers Association (BHMA), accredited by the American National Standards Institute (ANSI), sets the benchmark for quality and performance in the door hardware industry. Our standards ensure that every product meets rigorous criteria for security, durability, and functionality.

D4E

Architectural Door Hardware
American Standard

www.d4eme.com



ANSI A156.1 GRADE 1&2 HINGES



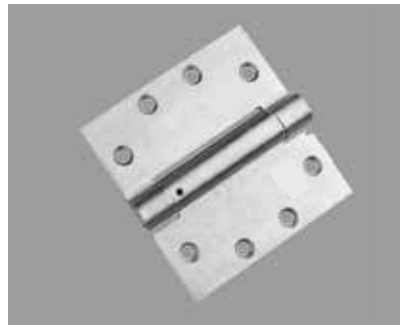
5 Knuckle 4 Ball bearing butt hinges
ANSI A156.1 Grade 1 Heavy duty
TA4030 to 4040



5 Knuckle 2 Ball bearing butt hinges
ANSI A156.1 Grade 2 Standard duty
TA4010 to 4020

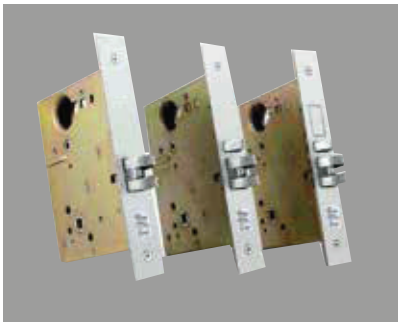


5 Knuckle 2 Ball bearing butt hinges
ANSI A156.1 Standard & Heavy duty
UL4000 series



3 Knuckle Single Acting Spring hinge
ANSI A156.17 Standard duty
TA4410

ANSI A156.13 GRADE 1 MORTISE LOCKS



ANSI A156.13 Grade 1
Mortise Locksets
TA1000 Series



ANSI A156.13 Grade 1, UL listed
Mortise Locksets Full Stainless Steel Body
UL1000 Series



ANSI A156.2 Grade 1
Cylindrical Locks With Lever/Knob
TA2000 Series



Auxiliary Lock (Deadbolts)
TA2100 Series

ANSI A156.4 GRADE 1 DOOR CLOSERS



ANSI A156.4 Light Duty Fixed Power
Size 3/4 UL Listed
TA7304



ANSI A156.4 Grade 1, UL Listed
Heavy Duty Power Adjustable Size 1/6
TA7216



ANSI A156.4 Grade 1, UL Listed
Heavy Duty Power Adjustable Size 1/6
TA 7116



ANSI A156.4 Grade 1, UL Listed
Extra Heavy Duty Cast Iron Door Closer Size 1/6
TA 7116

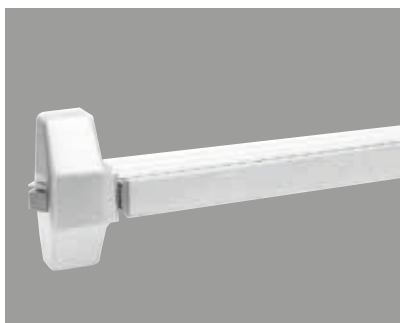
ANSI A156.3 GRADE 1 PANIC DEVICES



Wide Stile Rim Type
ANSI A156.3 Grade 1 UL Listed
TA9900F Series



Narrow Stile Rim Type
ANSI A156.3 Grade 1 UL Listed
TA9100F Series



Wide Stile Rim Exit Devices
Fire-Rated Exit Devices
UL9910F (GROOVED)



Narrow Stile Rim Exit Devices
Fire-Rated Exit Devices
UL9110F (GROOVED)

EN HINGES



5 Kunckle 2 Ball bearing hinges
Standard CE Certified
TE 4110



3D Adjustable Concealed Hinges
TE 4600



5 Kunckle 4 Ball bearing butt hinges
En Standard CE Certified
TE 4130



Rising hinges
TE 4160

EN MORTISE LOCKS



Sash Lock
TE 1510



Bathroom Lock
TE 1520



Latch Lock
TE 1530



Dead Bolt Lock
TE 1540

EN DOOR CLOSERS



Rack & Pinion With Standard Arm
TE7768



Rack & Pinion With Standard Arm
TE7772V

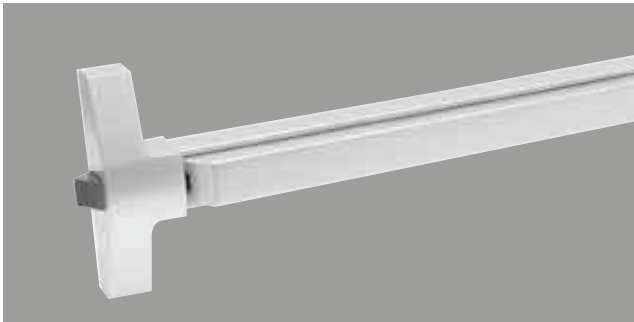


Cam Action System
TE7793P

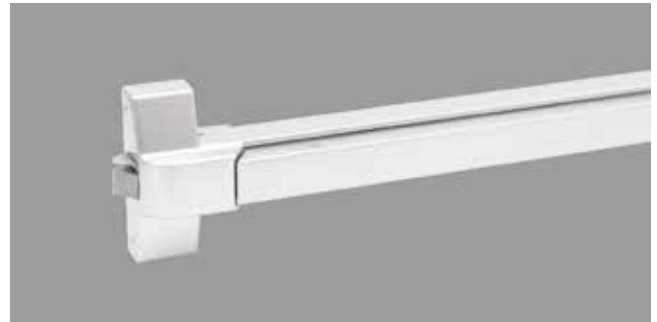


Concealed Cam Action
TE7796G

EN PANIC EXIT DEVICES



Narrow Stile Touch Bar Exit Devices
TE9800N Premium Series



Wide Stile Touch Bar Exit Devices
TE 9700 Project Series



Cross Bar Exit Devices
TE9000 Commercial Series

FLOOR SPRINGS



TE7830 (100KG)



TE7840 (120KG)



TE7850 (150KG)



TE7870 (450KG)

EN CYLINDERS



TE 3606.DC70



TE 3606.TT70



TE 3606.PC70



TE 3606.SC45

Master Key Facility



Welcome to D4E Master Key Facility, your premier destination for high-security, high-quality, and high-performance European Europrofile cylinders. Our state-of-the-art manufacturing facility is dedicated to producing top-tier locking solutions that meet the stringent demands of modern security needs.

Why Choose D4E Europrofile Cylinders?

High Security: Our Europrofile cylinders are engineered with advanced security features to provide maximum protection against unauthorized access and tampering.

High Quality: We use only the finest materials and adhere to rigorous quality control standards to ensure each cylinder meets our exacting specifications.

High Performance: Designed for durability and reliability, our cylinders deliver consistent performance even in the most demanding environments.

Strategic Location: Situated at the crossroads of Europe, Asia, and Africa, the UAE offers unparalleled access to global markets, ensuring timely delivery and reduced shipping costs.

At D4E Master Key Facility, we are committed to excellence in every aspect of our operations. Our Europrofile cylinders are a testament to our dedication to security, quality, and performance. Choose D4E for your security needs and experience the difference that superior craftsmanship and strategic manufacturing can make.

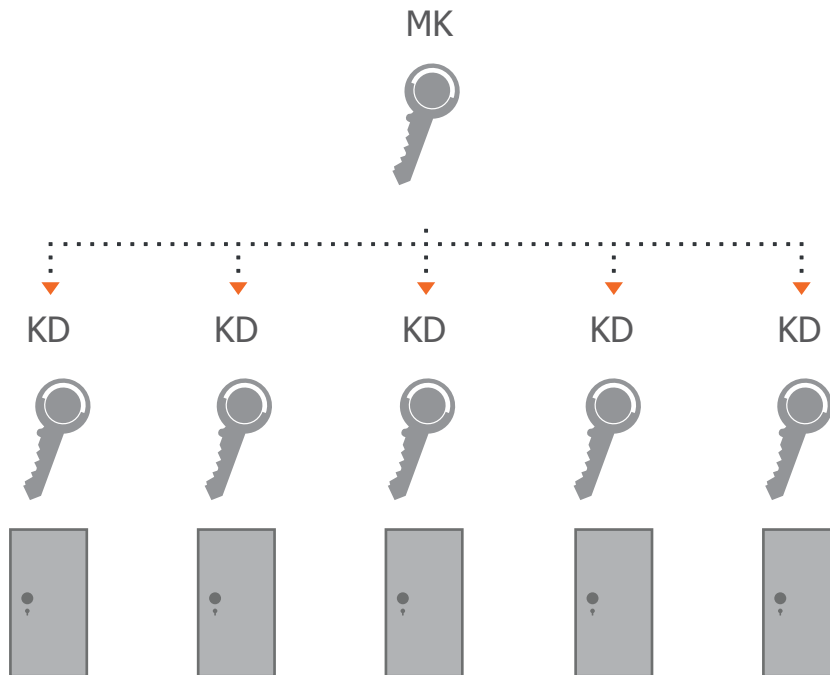


Management System
ISO 9001:2008
www.tuv.com
ID: 0091004318

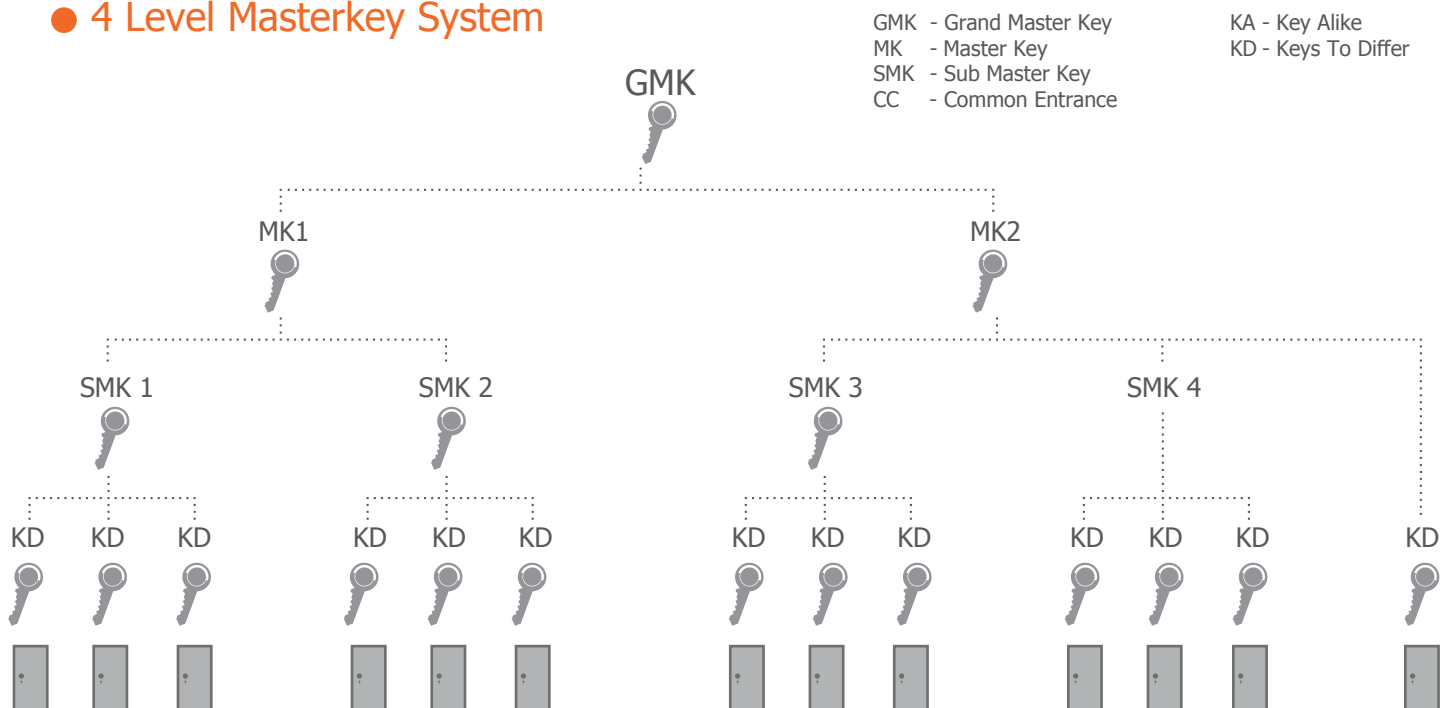


MASTERKEY SYSTEMS

● 2 Level Masterkey System

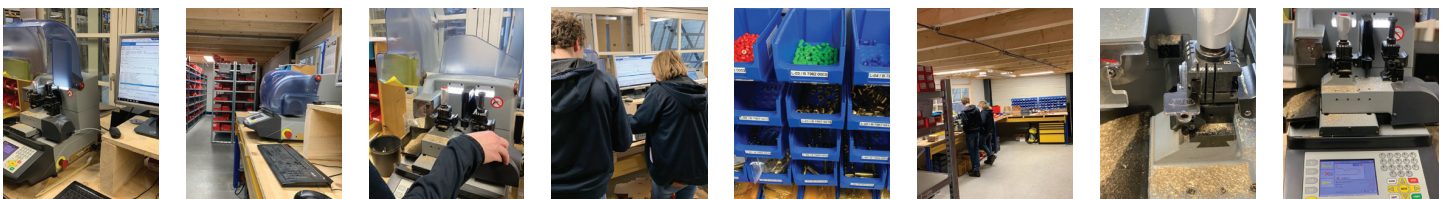


● 4 Level Masterkey System



GMK - Grand Master Key
 MK - Master Key
 SMK - Sub Master Key
 CC - Common Entrance

KA - Key Alike
 KD - Keys To Differ



Market Segments



Residential



Commercial



Industrial



Hospitality



Education



Transport

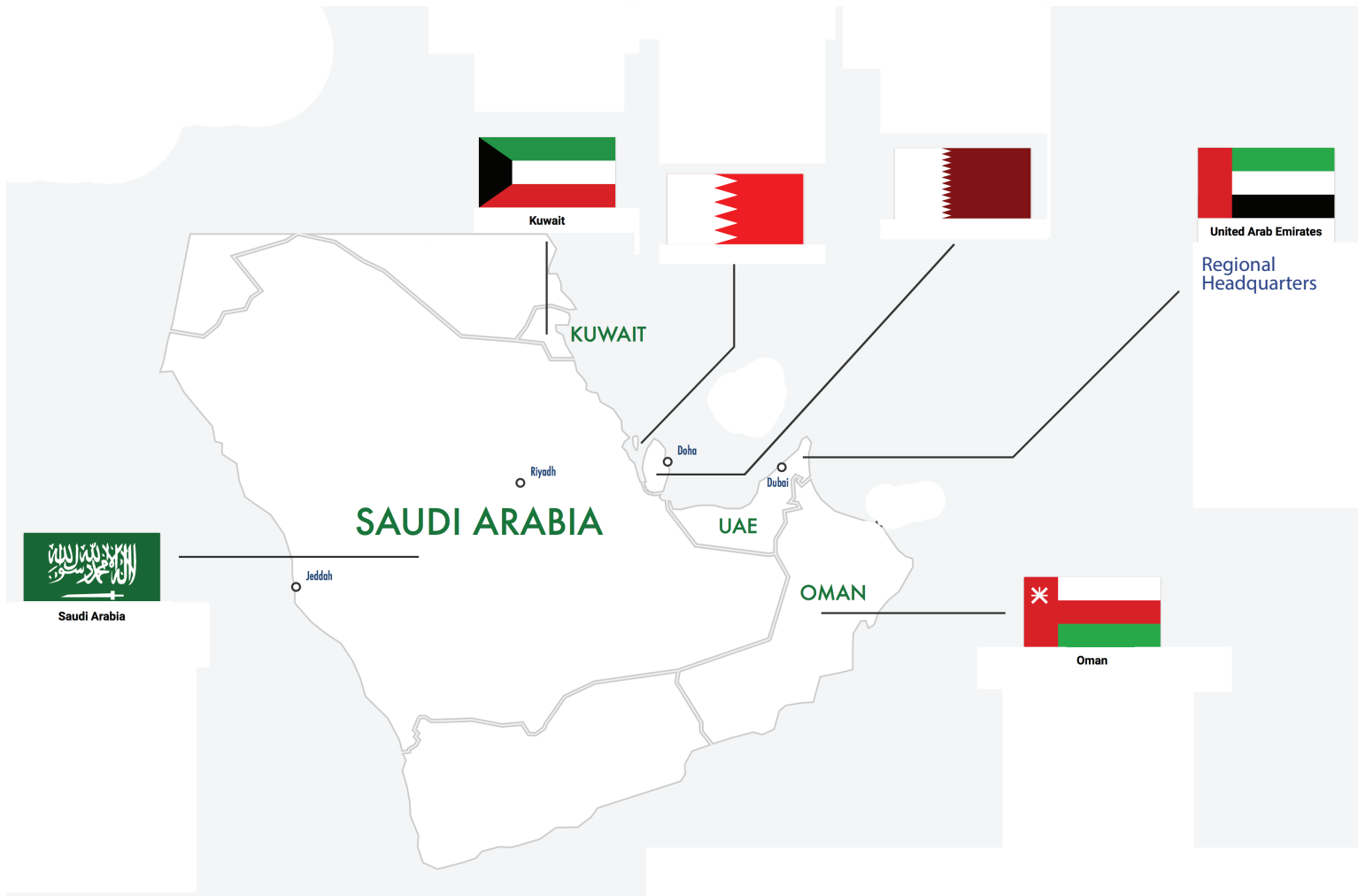


Healthcare



Retail

Regional Focus



Quality and Innovation D4E is committed to delivering products that meet the highest standards of quality and performance. The brand continuously invests in research and development to introduce innovative solutions that address the evolving needs of the market. D4E's products are designed to withstand the harsh climatic conditions of the GCC region, ensuring durability and reliability.

Customer-Centric Approach Understanding the diverse requirements of customers in the GCC, D4E offers customized solutions tailored to specific project needs. The brand's customer-centric approach is reflected in its comprehensive after-sales support and service, ensuring complete customer satisfaction.

Sustainability D4E is dedicated to sustainability and environmental responsibility. The brand employs eco-friendly manufacturing processes and materials, contributing to a greener future. **Conclusion** With its extensive product range, commitment to quality, and customer-focused approach, D4E is the preferred choice for door hardware solutions in the GCC countries. Whether for residential, commercial, or industrial projects, D4E provides reliable and innovative products that meet the highest standards of excellence.

Quality Assurance

25-07-2024, 11:30

UL Product iQ™

UL Product IQ™

Swinging Fire Door Closers

COMPANY
SYNERGY SOURCE & TRADING BV
Peter Van Den Eskelaar 20F
Vogelz, 5402 GC Netherlands

840553

For self closing door closer, without hold-open feature, floor mounted type, size 2-M (6061) 147850
For self closing door closer, without hold-open feature, floor mounted type, size 3-M (6061) 147850, 147850
For self closing door closer, without hold-open feature, surface mounted type, size 2-M (6061) 147216
For self closing door closer, without hold-open feature, surface mounted type, size 3-M (6061) 147216, 147216
For self closing door closer, without hold-open feature, concealed mounted type, size 2-M (6061) 147030
For self closing door closer, without hold-open feature, concealed mounted type, size 3-M (6061) 147030

Additionally Investigated to Standard UL 10C

For self closing door closer, without hold-open feature, surface mounted type, size 2-M (6061) 147850, 147850

Trademark and/or Trademark: **DHE**

Last Updated on 2024-07-24

The operation of company's name or product in this directory does not in itself assure that product as identified has been manufactured under UL Solutions' Factory - Up Service. Only those products bearing the UL Mark should be considered to be Certified and covered under UL Solutions' Factory - Up Service. Always look for the Mark on the product.

UL Solutions permits the reproduction of the material contained in Product IQ subject to the following conditions: The Guide Information, Assessment, Construction, Design, Systems, and/or Certifications (SIC) must be presented in their entirety and in a non-obscuring manner, without any manipulation of the data or drawings; 2. The information Reported from Product IQ, with permission from UL Solutions, must appear adjacent to the extracted material. In addition, the reported material must include a copyright notice in the following format: "©2024 UL Solutions"

Help file: <https://ul.com/ulproductiq/ulproductiqhelpfile.html>

SKG-IKOB PRODUCTCERTIFICAAT
423.312.22

Uitgegeven op: 14-12-2023

Certificaathouder
Algemeen Technisch B.V.
Eengeminaal 2
5402 GC - Vogelenz
T: +31 (0)24 358 111
E: info@algemeentech.com
I: www.algemeentech.com

Verklaring van SKG-IKOB
Dit certificaat is op basis van EN 1304 afgegeven conform het volgende Reglement voor Afkeuring. Certificaat en Inspectie van SKG-IKOB.

SKG-IKOB verklaart, dat het door de voor de certificaathouder vervaardigde hang- en sluitapparaat:

aanvullend is geïnspecteerd op:

geleverd onder logo / merk
AAA / ABL
geleverd onder typeaanduiding en artikelnummer:
7231, 7232, 84769, 84768, 7723

volstaat aan klasse 3 STER volgens EN 1304 en NEN 5585:2009 mits het bovengenoemde afgekeurde SKG mechanisme beschikbaar is het product te verkrijgen.

Voor SKG-IKOB

H. H.A.J. van Dael
Certificaathouder

De gegevens van dit certificaat worden gepubliceerd op de website van SKG-IKOB in de context van dit document nog geldig is. Dit kan verandering onderworpen zijn aan wijzigingen.

SKG-IKOB Certificaat
Productgroep 30
4191 NC - Certificaat
Product 302
4191 CC - Certificaat
T 088-244700
info@skg.nl
www.skg.nl

SKG-IKOB PRODUCTCERTIFICAAT
696.862.01

Uitgegeven op: 04-05-2024

Certificaathouder
Synergy Source & Trading BV
Peter van den Eskelaar 20F
5402 GC - Vogelenz
T: +31 43 724868
E: info@synergysrc.nl
I: www.synergysrc.nl

Verklaring van SKG-IKOB
Dit certificaat is op basis van EN 1304 afgegeven conform het volgende Reglement voor Afkeuring. Certificaat en Inspectie van SKG-IKOB.

SKG-IKOB verklaart, dat het door de voor de certificaathouder vervaardigde hang- en sluitapparaat:

aanvullend is geïnspecteerd op:

geleverd onder logo / merk
DIE
geleverd onder typeaanduiding en artikelnummer:
serie 992.282.41

volstaat aan klasse 3 STER volgens EN 1304 en NEN 5585:2009 mits het bovengenoemde afgekeurde SKG mechanisme beschikbaar is het product te verkrijgen.

Voor SKG-IKOB

H. H.A.J. van Dael
Certificaathouder

De gegevens van dit certificaat worden gepubliceerd op de website van SKG-IKOB in de context van dit document nog geldig is. Dit kan verandering onderworpen zijn aan wijzigingen.

SKG-IKOB Certificaat
Productgroep 30
4191 NC - Certificaat
Product 302
4191 CC - Certificaat
T 088-244700
info@skg.nl
www.skg.nl

CERTIFICATE
0960-CPR-SKG-IKOB.011696.01.ENG

Issued on: 10-09-2024

Certificaathouder
Synergy Source & Trading BV
Rensweg 1
5433 HC - Heteren Oost
T: +31 43 724868
E: info@synergysrc.nl
I: www.synergysrc.nl

Certificate of constancy of performance

Declaration of SKG-IKOB (Notified Body 9966)
In compliance with Regulation (EC) No 3052/16 of the European Parliament and of the Council of 9 March 2011 (the Construction Products Regulation) and CPR, the certificate applies to the construction product:

SKG-IKOB HINGES

As specified in the attached appendix placed on the market under the name or trade mark of the holder of this certificate and producing the holder of this certificate or the holder of this certificate in the manufacturing process. Free of charge.

This certificate attests that all provisions concerning the assessment and verification of constancy of performance described in Annex 2 of the regulatory.

EN 1302:2002
EN 1303:2002
EN 1303:2002 AC:2003

Under system 1 for the performance set out in this certificate are applied and that the performance of the construction product is assessed to remain constant.

The certificate was first issued on 02-12-2019 and will remain valid until the date as mentioned in this certificate as long as within the homologated standard, the construction product, the ACP method for the manufacturing conditions in the plant are modified. Equivalency, unless requested by customer by the notified product certification body.

For SKG-IKOB

H. H.A.J. van Dael
Certificaathouder

The scope of this certificate is limited to verify at www.skg.nl if this certificate is still valid and active. The certificate consists of 4 pages.

SKG-IKOB Certificaat
Productgroep 30
4191 NC - Certificaat
Product 302
4191 CC - Certificaat
T 088-244700
info@skg.nl
www.skg.nl

SKG-IKOB PRODUCTCERTIFICAAT
696.643.02

Uitgegeven op: 14-12-2023

Certificaathouder
Synergy Source & Trading BV
Peter van den Eskelaar 20F
5402 GC - Vogelenz
T: +31 43 724868
E: info@synergysrc.nl
I: www.synergysrc.nl

Verklaring van SKG-IKOB
Dit certificaat is op basis van EN 1304 afgegeven conform het volgende Reglement voor Afkeuring. Certificaat en Inspectie van SKG-IKOB.

SKG-IKOB verklaart, dat het door de voor de certificaathouder vervaardigde hang- en sluitapparaat:

aanvullend is geïnspecteerd op:

geleverd onder logo / merk
DIE
geleverd onder typeaanduiding en artikelnummer:
911.072.34.XXX

volstaat aan klasse 3 STER volgens EN 1304 en NEN 5585:2009 mits het bovengenoemde afgekeurde SKG mechanisme beschikbaar is het product te verkrijgen.

Voor SKG-IKOB

H. H.A.J. van Dael
Certificaathouder

De gegevens van dit certificaat worden gepubliceerd op de website van SKG-IKOB in de context van dit document nog geldig is. Dit kan verandering onderworpen zijn aan wijzigingen.

SKG-IKOB Certificaat
Productgroep 30
4191 NC - Certificaat
Product 302
4191 CC - Certificaat
T 088-244700
info@skg.nl
www.skg.nl

SKG-IKOB PRODUCTCERTIFICAAT
696.862.02

Uitgegeven op: 04-05-2024

Certificaathouder
Synergy Source & Trading BV
Peter van den Eskelaar 20F
5402 GC - Vogelenz
T: +31 43 724868
E: info@synergysrc.nl
I: www.synergysrc.nl

Verklaring van SKG-IKOB
Dit certificaat is op basis van EN 1304 afgegeven conform het volgende Reglement voor Afkeuring. Certificaat en Inspectie van SKG-IKOB.

SKG-IKOB verklaart, dat het door de voor de certificaathouder vervaardigde hang- en sluitapparaat:

aanvullend is geïnspecteerd op:

geleverd onder logo / merk
DIE
geleverd onder typeaanduiding en artikelnummer:
serie 992.282.42

volstaat aan klasse 3 STER volgens EN 1304 en NEN 5585:2009 mits het bovengenoemde afgekeurde SKG mechanisme beschikbaar is het product te verkrijgen.

Voor SKG-IKOB

H. H.A.J. van Dael
Certificaathouder

De gegevens van dit certificaat worden gepubliceerd op de website van SKG-IKOB in de context van dit document nog geldig is. Dit kan verandering onderworpen zijn aan wijzigingen.

SKG-IKOB Certificaat
Productgroep 30
4191 NC - Certificaat
Product 302
4191 CC - Certificaat
T 088-244700
info@skg.nl
www.skg.nl

SKG-IKOB PRODUCTCERTIFICAAT
696.633.02

Uitgegeven op: 28-09-2024

Certificaathouder
Synergy Source & Trading BV
Peter van den Eskelaar 20F
5402 GC - Vogelenz
T: +31 43 724868
E: info@synergysrc.nl
I: www.synergysrc.nl

Verklaring van SKG-IKOB
Dit certificaat is op basis van EN 1304 afgegeven conform het volgende Reglement voor Afkeuring. Certificaat en Inspectie van SKG-IKOB.

SKG-IKOB verklaart, dat het door de voor de certificaathouder vervaardigde hang- en sluitapparaat:

aanvullend is geïnspecteerd op:

geleverd onder logo / merk
DIE
geleverd onder typeaanduiding en artikelnummer:
serie 942.902.41

volstaat aan klasse 3 STER volgens EN 1304 en NEN 5585:2009 mits het bovengenoemde afgekeurde SKG mechanisme beschikbaar is het product te verkrijgen.

Voor SKG-IKOB

H. H.A.J. van Dael
Certificaathouder

De gegevens van dit certificaat worden gepubliceerd op de website van SKG-IKOB in de context van dit document nog geldig is. Dit kan verandering onderworpen zijn aan wijzigingen.

SKG-IKOB Certificaat
Productgroep 30
4191 NC - Certificaat
Product 302
4191 CC - Certificaat
T 088-244700
info@skg.nl
www.skg.nl

SKG-IKOB PRODUCTCERTIFICAAT
423.313.08

Uitgegeven op: 14-12-2023

Certificaathouder
Algemeen Technisch B.V.
Eengeminaal 2
5402 GC - Vogelenz
T: +31 (0)24 358 111
E: info@algemeentech.com
I: www.algemeentech.com

Verklaring van SKG-IKOB
Dit certificaat is op basis van EN 1304 afgegeven conform het volgende Reglement voor Afkeuring. Certificaat en Inspectie van SKG-IKOB.

SKG-IKOB verklaart, dat het door de voor de certificaathouder vervaardigde hang- en sluitapparaat:

aanvullend is geïnspecteerd op:

geleverd onder logo / merk
T85
geleverd onder typeaanduiding en artikelnummer:
7262

volstaat aan klasse 3 STER volgens EN 1304 en NEN 5585:2009 mits het bovengenoemde afgekeurde SKG mechanisme beschikbaar is het product te verkrijgen.

Voor SKG-IKOB

H. H.A.J. van Dael
Certificaathouder

De gegevens van dit certificaat worden gepubliceerd op de website van SKG-IKOB in de context van dit document nog geldig is. Dit kan verandering onderworpen zijn aan wijzigingen.

SKG-IKOB Certificaat
Productgroep 30
4191 NC - Certificaat
Product 302
4191 CC - Certificaat
T 088-244700
info@skg.nl
www.skg.nl

SKG-IKOB PRODUCTCERTIFICAAT
696.863.02

Uitgegeven op: 28-09-2024

Certificaathouder
Synergy Source & Trading BV
Peter van den Eskelaar 20F
5402 GC - Vogelenz
T: +31 43 724868
E: info@synergysrc.nl
I: www.synergysrc.nl

Verklaring van SKG-IKOB
Dit certificaat is op basis van EN 1304 afgegeven conform het volgende Reglement voor Afkeuring. Certificaat en Inspectie van SKG-IKOB.

SKG-IKOB verklaart, dat het door de voor de certificaathouder vervaardigde hang- en sluitapparaat:

aanvullend is geïnspecteerd op:

geleverd onder logo / merk
DIE
geleverd onder typeaanduiding en artikelnummer:
serie 942.902.41

volstaat aan klasse 3 STER volgens EN 1304 en NEN 5585:2009 mits het bovengenoemde afgekeurde SKG mechanisme beschikbaar is het product te verkrijgen.

Voor SKG-IKOB

H. H.A.J. van Dael
Certificaathouder

De gegevens van dit certificaat worden gepubliceerd op de website van SKG-IKOB in de context van dit document nog geldig is. Dit kan verandering onderworpen zijn aan wijzigingen.

SKG-IKOB Certificaat
Productgroep 30
4191 NC - Certificaat
Product 302
4191 CC - Certificaat
T 088-244700
info@skg.nl
www.skg.nl

Notable Projects

D4E has undertaken numerous notable projects across Europe, and here we present some of their most prestigious ones.



Grotius Den Haag



**Student Experience
Amsterdam**



West Beat Amsterdam



Bajeskwartier Amsterdam

D4E Head Quarters

Synergy Source & Trading BV

Pater van den Elsenlaan 20F

5462 GG Veghel

Netherlands

✉ +31 413 724 988

☎ mailbox@synergyst.nl

D4E Regional Office

D4E Middle East L.L.C-FZ

Meydan Grandstand, 6th

floor, Meydan Road,

Nad Al Sheba, Dubai, U.A.E.

✉ +971 6 539 6440

☎ sales@d4eme.com

